



+WELLPAWS®

DISCOVER THE RANGE OF WELLPAWS PRODUCTS

PET SUPPLEMENTS PRODUCT CATALOGUE 2025



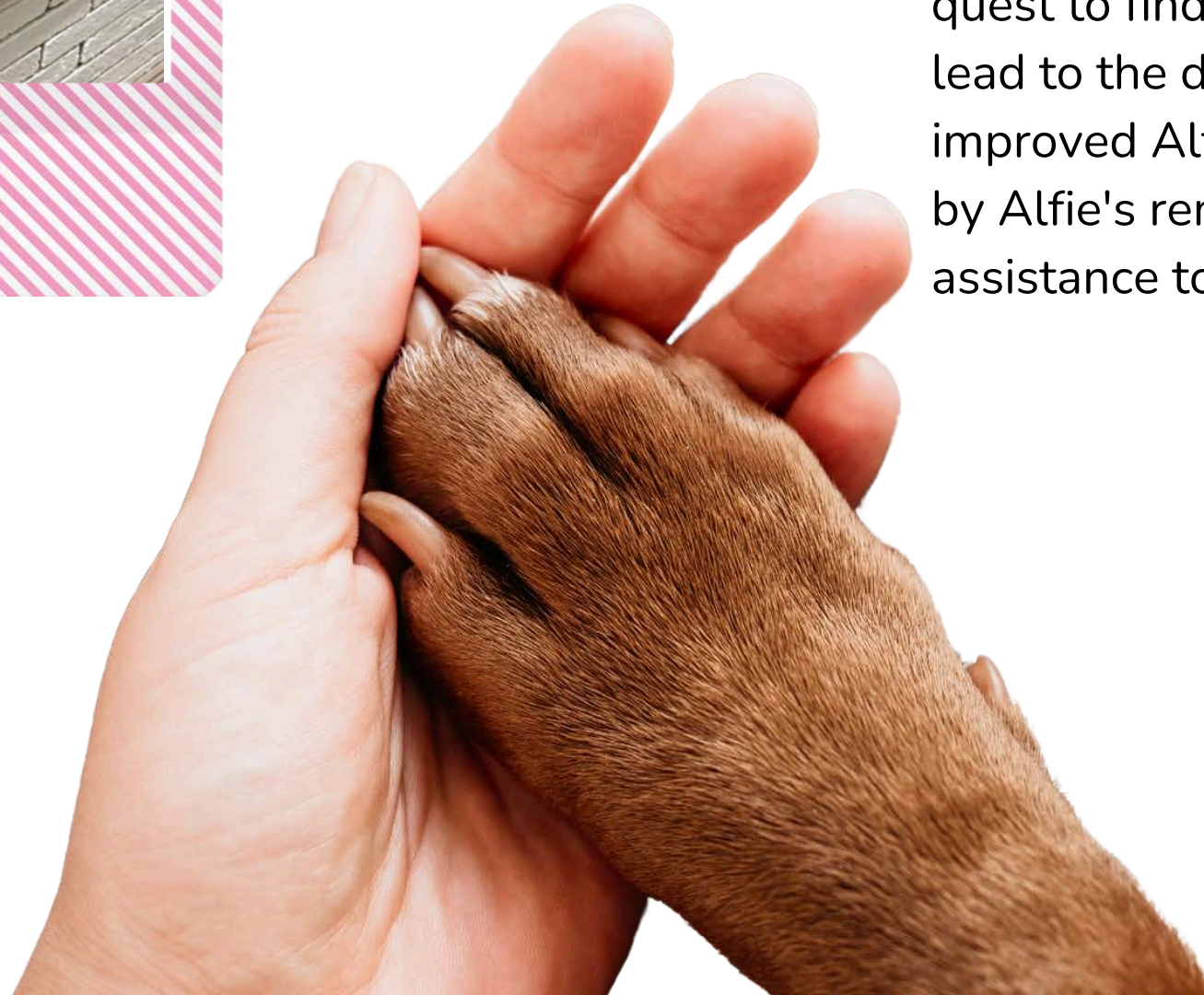


Alfie



WellPaws Story

Our founder's family dog Alfie, holds a special place in his heart. Observing Alfie's daily discomfort due to joint issues prompted him to take action. Following many veterinary consultations, a moment of clarity sparked a quest to find a remedy for Alfie's joint discomfort. This pursuit to help Alfie lead to the development of a remarkable supplement that significantly improved Alfie's mobility, restoring his vitality and quality of life. Motivated by Alfie's remarkable transformation, WellPaws® was born to offer assistance to pets experiencing common health and well-being challenges.



Our Background

Established in 2017, our family-owned business and co-manufacturer adopts a distinctive ethos by emphasising quality over quantity. Specialising in the production of high-end pet supplements for European markets, our in-house PHD veterinarians, nutrition specialists, and a tech-proficient team to pioneer advanced supplement solutions. Our product line adheres to rigorous certifications, including GMP, FDA, and ISO compliance standards.





Our Mission at WellPaws

Our supplements are clinically proven to guarantee both quality and efficiency. Each product in our range is meticulously packaged using recyclable materials, aligning with our mission to promote happiness among pets, humans, and contribute to environmental sustainability.

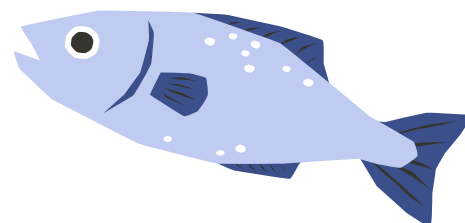


WellPaws Syrups



Syrups that will have your furry friend smacking their lips and wagging their tail!

WellPaws® has unleashed a mouth-watering selection of syrups that will send your pet's tail into a wagging frenzy! Whether you drizzle it over their food or use it as a yummy treat, these pet-approved syrups are the perfect way to keep your pet happy and healthy!





Reduces Shedding & Moulting
Hydrates Dry, Flaky Skin
Improves Coat Condition
Alleviates Allergic Reactions

Skin & Coat Care Syrup



Skin & Coat Care Syrup

Packaging 300ml bottle
Fish Flavour

Storage Instructions: Store in a cool dry place below 25°C away from direct sunlight. Once opened to be consumed within 120 days.

Direction for use: Can be added to pet food, mixed with drinking water or given directly.

Recommended daily dosage: 1-10 kg body weight 5 ml, 10-20 kg body weight 10 ml, 20-30 kg body weight 15 ml, 30-45 kg body weight 20 ml.



10ml contains:

Salmon Oil 1500 mg
Zinpro®Propath® 100 mg
Hydrolysed Collagen 50 mg
Vitamin C 10 mg
Biotin 10 mg
Selenium 2 mg
Vitamin D3 60000 IU

Composition: Purified Water, Salmon Oil, Hydrolysed Salmon Protein, Hydrolysed Collagen (Type 1-3) Additives: Zinc 10000 mg/kg, Vitamin C 1000 mg/kg, Biotin 1000 mg/kg, Selenium 200 mg/kg, Vitamin D3 6000000 IU/Kg, Gum Arabic (E414) 2700mg/kg Preservatives: Tocopherol 5000 mg / kg

Analytical Constituents: Crude Protein min 0.8%, Crude Fibre max 0.3%, Crude Ash max 1%, Crude Fat min 0.2%, Moisture max 96.9%



Helps Mobility & Fights Inflammation
Slows Down Pesky Joint Wear
Reduces Arthritis Progression
Eases Joint Stiffness, Aches & Pain

Bone & Joint Care Syrup



Bone & Joint Care Syrup



Packaging 300ml bottle
Fish Flavour

Storage Instructions: Store in a cool dry place below 25°C away from direct sunlight. Once opened to be consumed within 120 days.

Direction for use: Can be added to pet food, mixed with drinking water or given directly.

Recommended daily dosage: 1-10 kg body weight 5 ml, 10-20 kg body weight 10 ml, 20-30 kg body weight 15 ml, 30-45 kg body weight 20 ml.



10ml contains:

Salmon Oil 1500 mg
Glucosamine 300 mg
Biocell[®] Collagen 75 mg
Chondroitin 50 mg
MSM 30 mg
Hyaluronic Acid 30 mg
Vitamin C 16 mg
Manganese 2.4mg

Composition: Purified Water, Salmon Oil, Glucosamine (Shellfish), Hydrolysed Salmon Protein, Hydrolysed Collagen (Type 1-3), Chondroitin Sulphate, Methyl Sulphonyl Methane, Hyaluronic Acid Additives: Gum Arabic (E 414) 2700mg/ kg, Vitamin C 1600 mg/kg, Manganese (3b502) 240 mg/kg Preservatives: Tocopherol 5000mg /kg

Analytical Constituents: Crude Protein min 1.7%, Crude Fibre max 1.5%, Crude Ash max 1.3%, Crude Fat min 0.2%, Moisture max 94.5%



Counteracts Anxiety & Loneliness
Promotes Relaxation Without Inducing Drowsiness
Alleviates Stress-Related Symptoms
Enhances both Sleep Quality & Emotional Well-being

Calming Care Syrup



Calming Care Syrup



**Packaging 300ml bottle
Fish Flavour**

Storage Instructions: Store in a cool dry place below 25°C away from direct sunlight. Once opened to be consumed within 120 days.

Direction for use: Can be added to pet food, mixed with drinking water or given directly.

Recommended daily dosage: 1-10 kg body weight 5 ml, 10-20 kg body weight 10 ml, 20-30 kg body weight 15 ml, 30-45 kg body weight 20 ml.



10ml contains:

Salmon Oil 1500 mg
Passiflora 120 mg
Durelax® 40 mg
Valerian 40 mg
L-theanine 30 mg

Composition: Purified Water, Salmon Oil, Melissa Officinalis, Hydrolysed Salmon Protein Additives: Passiflora 12000 mg/kg, Durelax® (Melissa Officinalis) 4000 mg/kg, Valerian 4000 mg/kg, Camellia Sinensis (L-Theanine) 3000 mg/kg, Gum Arabic (E 414) 2700mg/kg Preservatives: Tocopherol 5000 mg / kg

Analytical Constituents: Crude Protein min 0.9%, Crude Fibre max 2.8%, Crude Ash max 0.5%, Crude Fat min 0.2%, Moisture max 96%



**Boosts Health & Wellbeing
Supercharges Immune System
Packed with Essential Vitamins & Minerals
Helps Pets to Thrive**

Immune Boost Syrup

Immune Boost Syrup


Packaging 300ml bottle
Fish Flavour

Storage Instructions: Store in a cool dry place below 25°C away from direct sunlight. Once opened to be consumed within 120 days.

Direction for use: Can be added to pet food, mixed with drinking water or given directly.

Recommended daily dosage: 1-10 kg body weight 5 ml, 10-20 kg body weight 10 ml, 20-30 kg body weight 15 ml, 30-45 kg body weight 20 ml.



10ml contains:

Salmon Oil 1500 mg
Ferrous Oxide 60 mg
Fibruline® Instant 30 mg
Vitamin B3 25 mg
Vitamin E 32 IU
Zinc Oxide 20 mg
Vitamin B2 5mg
Vitamin B1 5mg
Vitamin A 14000 IU
Vitamin B6 2.5 mg
Biotin 1.2 mg
Manganese 1 mg
Vitamin D3 80000 IU
Copper Sulphate 450 µg
Folic Acid 300 µg
Vitamin B12 50 µg

cont. on next page

Immune Boost Syrup



Composition: Purified Water, Salmon Oil, Hydrolysed Salmon Protein, Fibruline® Instant (Inulin) Additives: Gum Arabic (E 414) 2700mg/kg, Ferrous Oxide(E172) 6000 mg/kg, Vitamin B3 2500 mg/kg, Vitamin E 3200 IU/kg, Zinc Oxide 2000 mg/kg, Vitamin B1 500 mg/kg, Vitamin B2 500 mg/kg, Vitamin A 1400000 IU/kg, Vitamin B6 250 mg/kg, Biotin 120 mg/kg, Manganese 100 mg/kg, Vitamin D3 8000000 IU/kg, Copper Sulphate 45 mg/kg, Folic Acid 30 mg/kg , Vitamin B12 5mg/kg
Preservatives: Tocopherol 5000 mg / kg

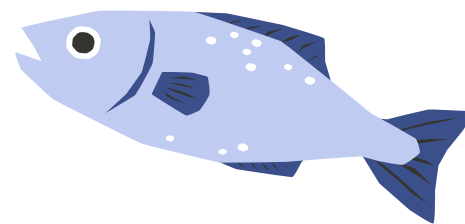
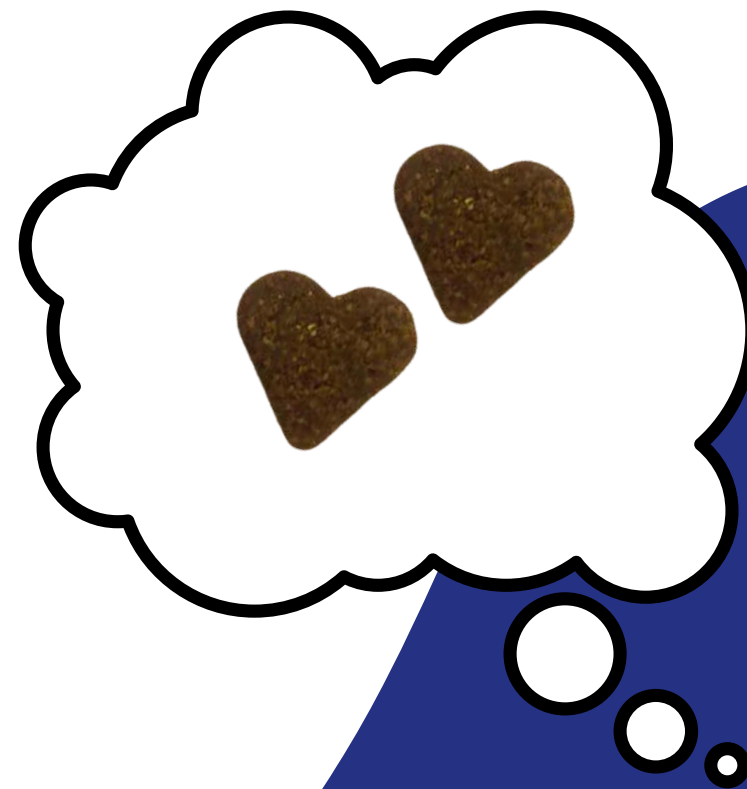
Analytical Constituents: Crude Protein min 1.3%, Crude Fibre max 0.8%, Crude Ash max 1.3%, Crude Fat min 0.55%, Moisture max 95.5%



WellPaws Chewable Supplements

Taste just like a Treat!

Our tasty chewable pet supplements are carefully crafted to delight your beloved pets, making sure they see them as a special treat. These chewable supplements are the top choice for addressing health and wellness concerns in pets.





Aids Mobility & Reduces Inflammation
Slows Down Degenerative Joints
Supports Cartilage Health
Relieves Joint Stiffness & Discomfort

Joint Care
Chewable



Joint Care Chewable



Packaging 60 Chewy Supplements 180g
Fish Flavour

Storage Instructions: Store in a cool dry place below 25°C away from direct sunlight.

Recommended Daily Dosage: For dogs: up to 15 kg body weight 1 chew per day, 15-30kg 2 chews per day, over 30kg 3 chews per day. For cats: 3-6kg 1/2 chew per day, 6-15kg 1 chew per day.

Analytical Constituents: Crude Protein min 24% Crude Fibre max 0.85% Crude Ash max 9% Crude Fat min 12% Moisture max 6.56%



Each chewable bite (3g) provides:

Glucosamine Sulphate 420mg
Biocell ®Collagen 75mg
Chondroitin Sulphate Sodium 30mg
Vitamin C 24mg
EPA+DHA 10mg
Manganese 3.6mg
Boscurin®(Turmeric, Boswellia, Collagen)
3mg Sodium Hyaluronate 2.4mg
Vitamin E 0.435mg

Composition: Chicken Powder (24%), Sorghum Flour, Glycerin, Glucosamine Sulphate, Rice Flour, Gum Arabic, Salmon Oil (source of EPA+DHA), Safflower Oil, Biocell ®Collagen, Aqua, Chondroitin Sulphate Sodium, Vitamin E, Vitamin C, Pectin, Apple Vinegar, Manganese, Boscurin® (Turmeric, Boswellia, Collagen), Sodium Hyaluronate, Yucca. Additives (per kg): Vitamin C 8000mg, Vitamin E 145mg (175 IU)/kg, Manganese 1200mg/kg, Turmeric and Boswellia 1000mg/kg, Gum Arabic (E414) 50000 mg/kg




Eases Anxiety
Promotes Relaxation Without Drowsiness
Helps Reduce Stress
Improves Sleep Quality & Emotional Balance

Calming Care
Chewable





Calming Care Chewable



Packaging 60 Chewy Supplements 180g
Fish Flavour

Storage Instructions: Store in a cool dry place below 25°C away from direct sunlight.

Recommended Daily Dosage: For dogs: up to 15 kg body weight 1 chew per day, 15-30kg 2 chews per day, over 30kg 3 chews per day. For cats: 3-6kg 1/2 chew per day, 6-15kg 1 chew per day.

Analytical Constituents: Crude Protein min 27% Crude Fibre max 1.4% Crude Ash max 6.5% Crude Fat min 9.2% Moisture max 9%



Each chewable bite (3g) provides

Chamomile 90 mg
Passiflora 90 mg
Valerian 50 mg
L-Tryptophan 45 mg
Durelax® 40 mg

Composition: Chicken Powder (32%), Sorghum Flour, Glycerin, Rice Flour, Arabic Gum, Chicken Fat, Passiflora Extract, Chamomilla Extract, Safflower Oil, Aqua, Valerian Extract, L-Tryptophan, Durelax® (Melissa Officinalis), Pectin, Apple Vinegar, Yucca. Additives (per kg): Gum Arabic (E414) 50000 mg/kg, Passiflora 30000 mg/kg, Chamomile 30000 mg/kg, Valerian 17000 mg/kg, L-tryptophan 15000 mg/kg, Melissa Officinalis 13000 mg/kg.



Improves Coat Condition
Soothes Itchy & Sensitive Skin
Alleviate Allergic Reaction
Relieves Scratching, Licking & Chewing

Itch & Allergy Care Chewable



Itch & Allergy Care Chewable



Packaging 60 Chewy Supplements 180g
Fish Flavour

Storage Instructions: Store in a cool dry place below 25°C away from direct sunlight.

Recommended Daily Dosage: For dogs: up to 15 kg body weight 1 chew per day, 15-30kg 2 chews per day, over 30kg 3 chews per day. For cats: 3-6kg 1/2 chew per day, 6-15kg 1 chew per day.

Analytical Constituents: Crude Protein min 24% Crude Fibre max 0.85% Crude Ash max 9% Crude Fat min 12% Moisture max 6.56%



Each chewable bite (3g) provides

Flaxseed Oil 110 mg
Salmon Oil 85 mg
Apple Vinegar 55 mg
Diamond V®XPC 50 mg
Turmeric 29 mg
Quercetin 25 mg
Bromelain (Pineapple) 25 mg
Astragalus 25 mg
Nettle 25mg
B-Plex®(Zinc) 14 mg
Vitamin B1 7 mg
Vitamin B2 7 mg
Vitamin B6 4mg
Biotin 2170 µg
Mixed Probiotics (Lactobacillus Fermentum, Lactobacillus Plantarum, Lactobacillus Rhamnosus) 300 million CFU

cont. on next page



Itch & Allergy Care Chewable



Composition: Sorghum Flour (32.2%), Chicken Powder (31.03%), Glycerin, Flaxseed Oil, Salmon Oil, Inactive Yeast's (Diamond V®XPC) Apple Vinegar, Quercetin, Bromelain (Pineapple), Pectin, Yucca. Additives (per kg): Gum Arabic (E414) 50000 mg/kg, Turmeric extract 10000 mg/kg, Urtica Dioica (Nettle) 8500 mg/kg, Astragalus 8500 mg/kg, Zinc 5000 mg/kg, Vitamin B1 2500 mg/kg, Vitamin B2 2500 mg/kg, Vitamin B6 1500 mg/kg, Biotin 740 mg/kg.





Promotes Digestive Health
Aids Immune Function
Enhances Gut Microbiome Balance
Provides Essential Fibre

Gut Health Triple Action
(Pre, Pro & Post Biotics)
Chewable

Gut Health Triple Action (Pre, Pro & Post Biotics) Chewable



Packaging 60 Chewy Supplements 180g
Fish Flavour

Storage Instructions: Store in a cool dry place below 25°C away from direct sunlight.

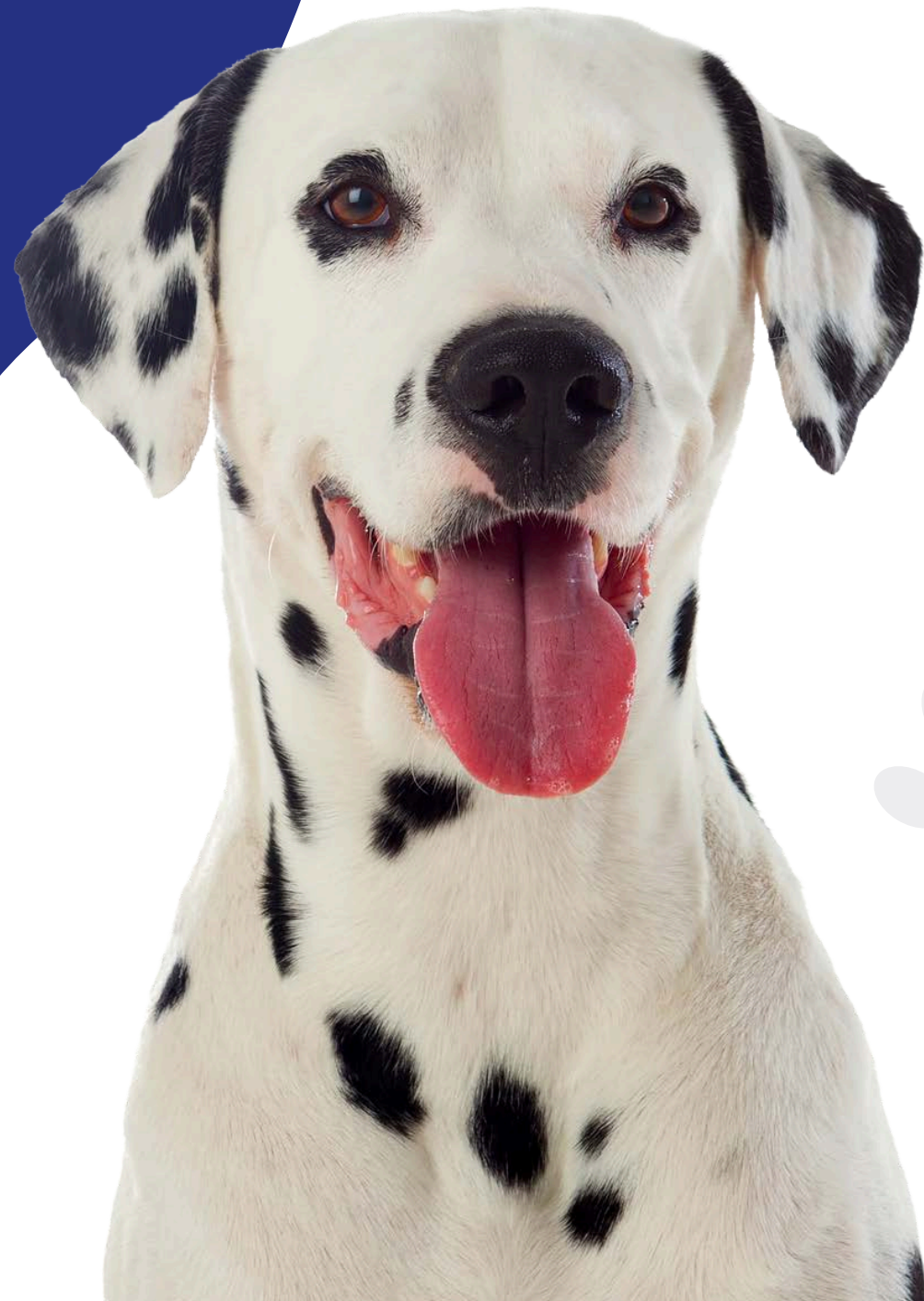
Recommended Daily Dosage: For dogs: up to 15 kg body weight 1 chew per day, 15-30kg 2 chews per day, over 30kg 3 chews per day. For cats: 3-6kg 1/2 chew per day, 6-15kg 1 chew per day.

Analytical Constituents: Crude Protein min 26.2% Crude Fibre max 1.5% Crude Ash max 6% Crude Fat min 11.5% Moisture max 8.5%



Each chewable bite (3g) provides
Bacillus Coagulans 2 billions CFU
Diamond V® XPC 60 mg
Fibrulose® (Inulin/Fos) 9 mg

Composition: Chicken Powder (33.6%), Sorghum Flour, Glycerin, Arabic Gum, Chicken Fat, Safflower Oil, Diamond V® XPC (Postbiotic), Aqua, Probiotic (Bacillus Coagulans), Pectin, Fibrulose® (Inulin+Fos), Apple Vinegar, Yucca. Additives (per kg): Gum Arabic (E414) 50000 mg/kg, Bacillus Coagulans 666 billions CFU/kg.



Address

101-103 Oldham Street,
Manchester,
M4 1LW

Sales & Customer Service

01615 279259
sales@wellpaws.co.uk

General Enquiries

hello@wellpaws.co.uk

Website

www.wellpaws.co.uk